

# SELF BRIEFING

## Międzynarodowe Zawody Szybowcowe Leszno Cup w klasie otwartej

## International Gliding Championships Leszno Cup in open class



OGÓLNOPOLSKIE ZAWODY SZYBOWCOWE W KLASIE OPEN

02-11.08.2024



## INDEX

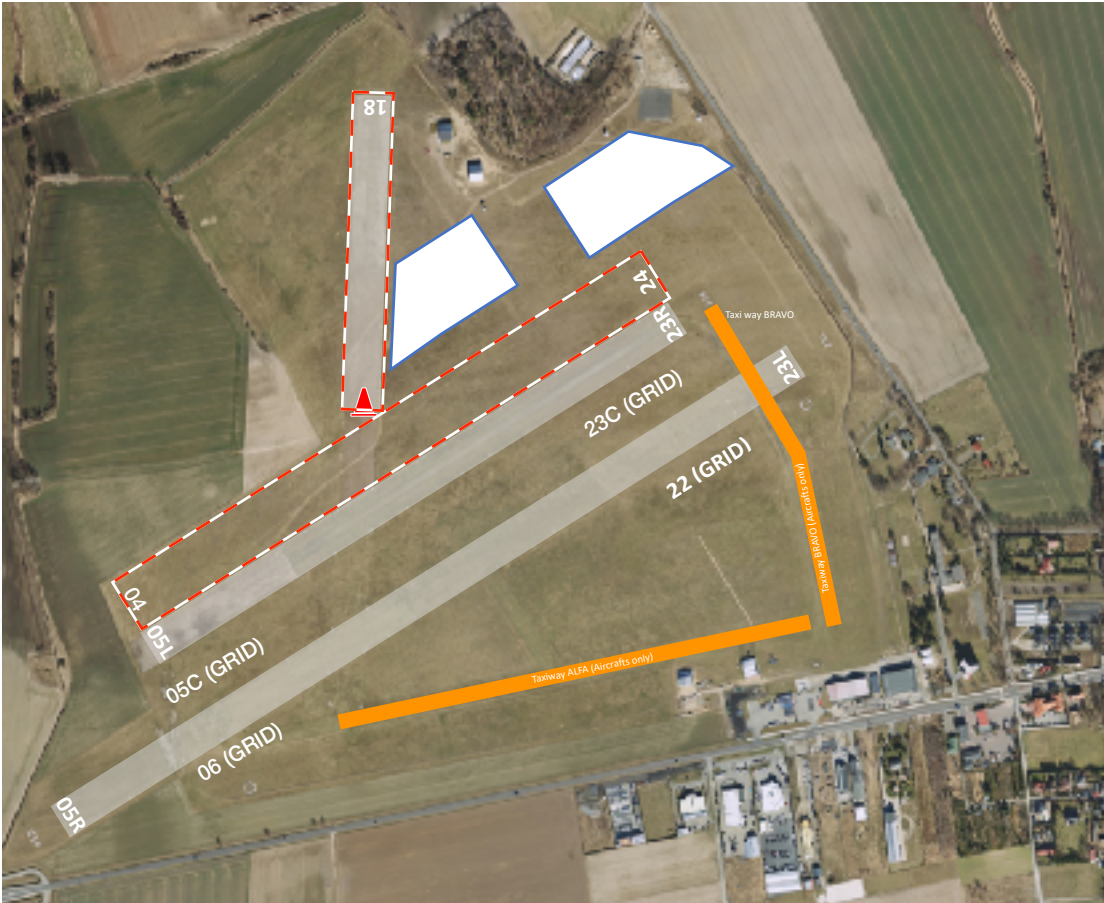
### MAP

- I-1 ARFIELD INFORMATION
- I-2 CONTEST SITE BOUNDARIES
- I-3 CONTEST SITE MAP -GENERAL
- I-4 CONTEST SITE MAP - ADMINISTRATION
- G-23-1 GRID 23 , WEIGHT CHECK & GRID TRAFFIC
- G-23-2 GRID 23, CAR PARKING AND TRAFFIC (DURING TAKEOFF TIME)
- G-23-3 GRID 23, CAR TRAFFIC (AFTER TAKEOFF TIME)
- AT-23-NW AEROTOWING PROCEDURE 23 NW
- RZ-23-NW RELEASE ZONE for AEROTOWING PROCEDURE 23 NW
- AT-23-SW AEROTOWING PROCEDURE 23 SW
- RZ-23-SW RELEASE ZINE for AEROTOWING PROCEDURE 23 SW
- RL-23 LANDING PROCEDURE 23 FOR RELAUNCH (DURING TAKEOFF TIME)
- EL-23 EMERGENCY LANDING PROCEDURE 23 in case of low release
- FL-23 FINISH AND LANDING PROCEDURE 23
- L-23 LANDING 23 PROCEDURE AND TOWING BACK TO GLIDERS PARKING

### MAP

- G-05-1 GRID 05, WEIGHT CHECK & GRID TRAFFIC
- G-05-2 GRID 05, CAR PARKING AND TRAFFIC DURING T (DURING TAKEOFF TIME)
- G-05-3 GRID 05, CAR PARKING AND TRAFFIC DURING T (AFTER TAKEOFF TIME)
- AT-05-NE AEROTOWING PROCEDURE 05 NE
- RZ-05-NE RELEASE ZONE for AEROTOWING PROCEDURE 05 NE
- AT-23-SW AEROTOWING PROCEDURE 05 SE
- RZ-23-SW RELEASE ZONE forAEROTOWING PROCEDURE 05 SE
- RL-23 LANDING FOR RELAUNCH PROCEDURE 05 (DURING TAKEOFF TIME)
- EL-23 EMERGENCY LANDING PROCEDURE 05 in case of low release
- FL-23 FINISH AND LANDING PROCEDURE 05
- L-23 LANDING 05 PROCEDURE AND TOWING BACK TO GLIDERS PARKING
- DP DEPARTURE POINTS
- RF RADIO FREQUENCIES

## MAP I-1. AIRFIELD INFORMATION



### LESZNO AIRFIELD DETAILS

- Airfield name: Lotnisko Leszno (ICAO: EPLS)
- Location: N 51°50'07.0" E 16°31'21.6"
- Elevation: 310ft AMSL (95 m)
- Frequency: Leszno Radio 122.305 (8,33kHz spacing)
- Runways:
  - 05R/23L (1320 x 50 m, grass) / main runway
  - 05L/23R (950 x 50 m, grass) / reinforced grass runway
  - 18 (450 x 50 m, grass) runway temporarily shortened for EGC 2023: 26.07 - 12.08.2023*
  - 06/24 (900 x 100 m, grass) set temporarily, only for landing EGC gliders*
- Leszno Airfield website: [www.lotniskoleszno.pl](http://www.lotniskoleszno.pl)
- On-line webcam: [www.lotniskoleszno.pl/kamera/](http://www.lotniskoleszno.pl/kamera/)
- Time zone: UTC +2

Contact details: +48 577 215 344, [info@lotniskoleszno.pl](mailto:info@lotniskoleszno.pl)

## MAP I-2. CONTEST SITE BOUNDARIES



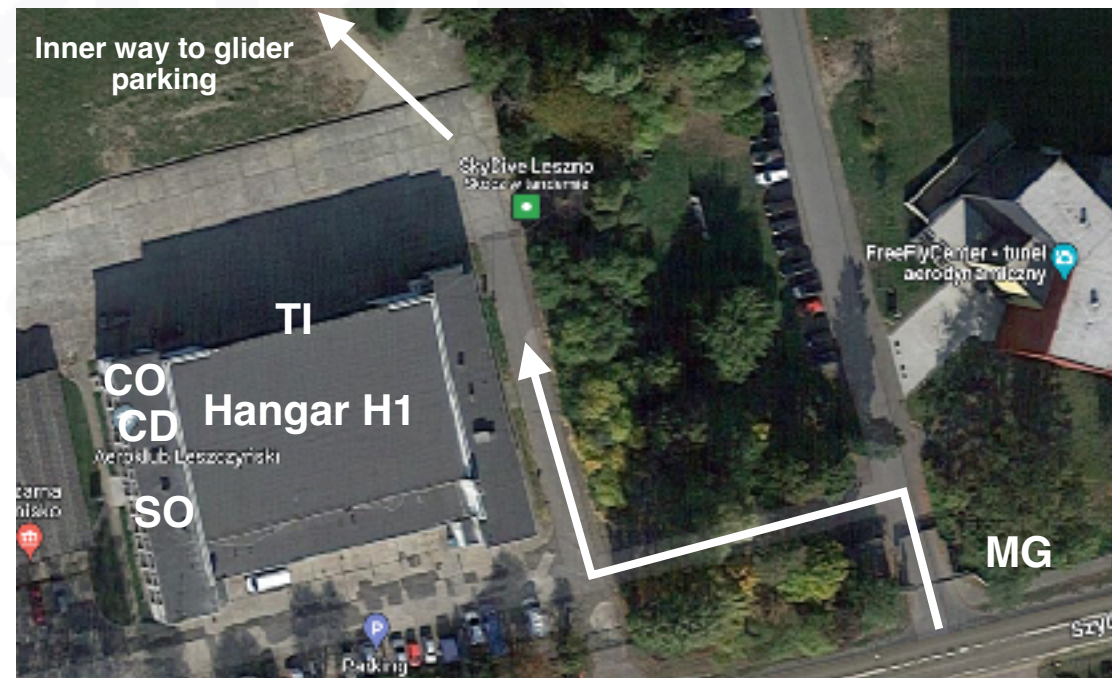
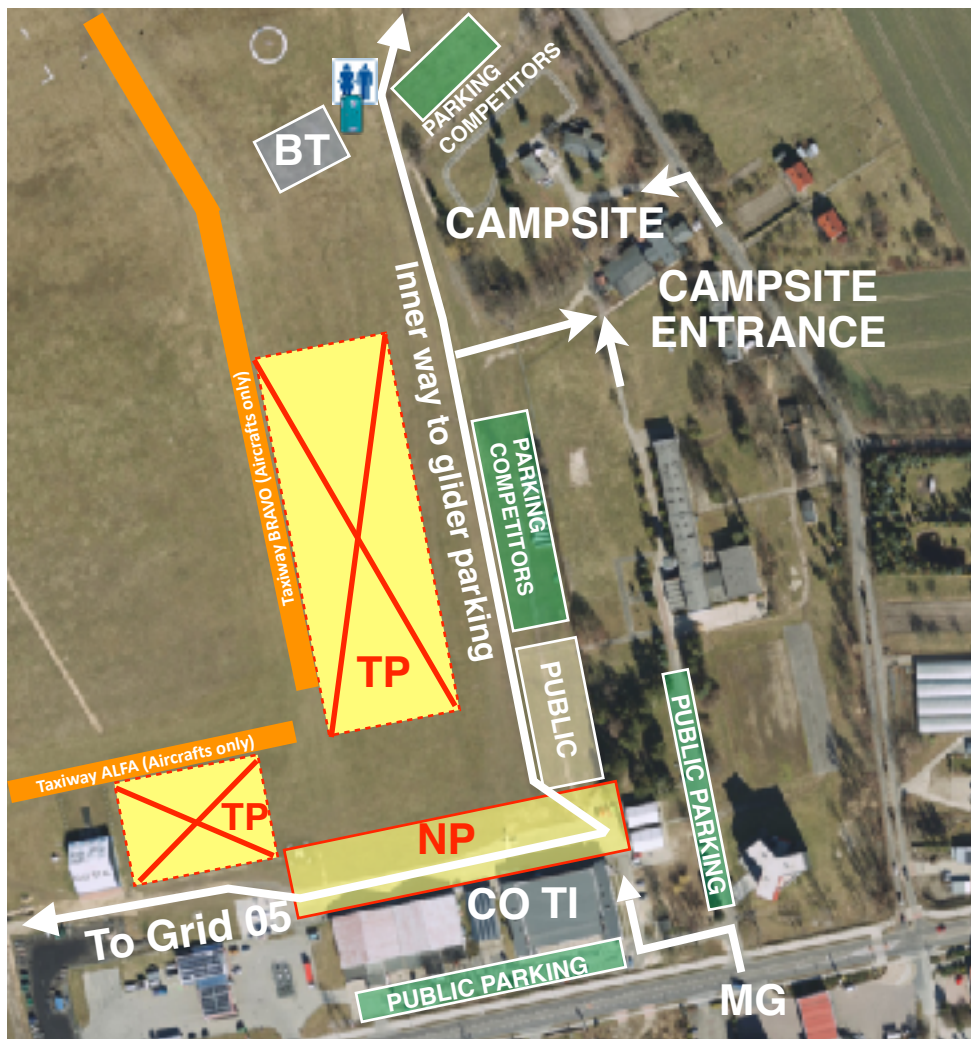
# MAP I-3. CONTEST SITE MAP - GENERAL



SCAN QR CODE TO OPEN  
GOOLE MAP OR CLICK: [HERE](#)

## MAP I-4. CONTEST SITE MAP - ADMINISTRATION

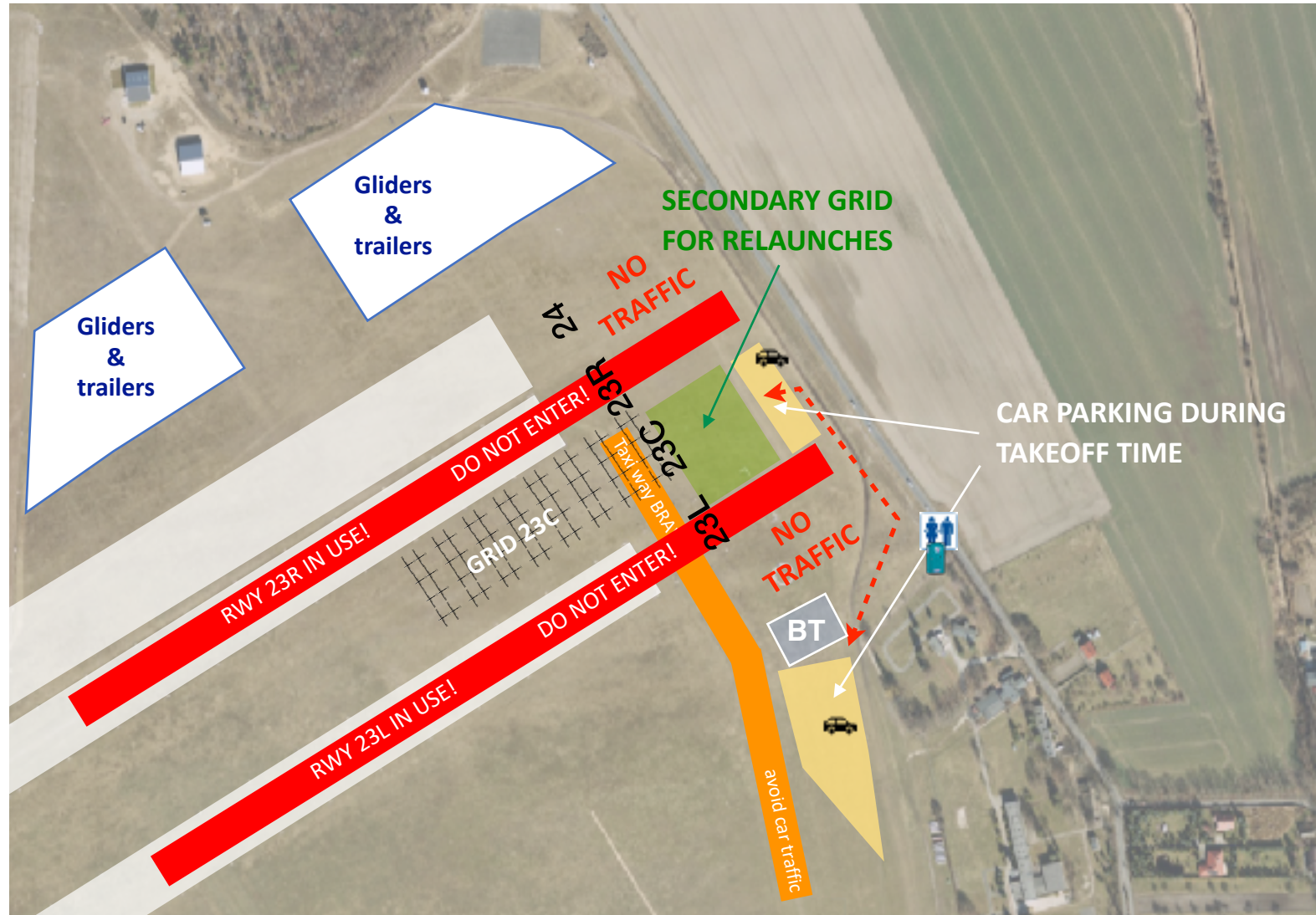
- BT – BRIEFING & MEALS TENT (AIRSIDE)
- CO – CONTEST OFFICE & REGISTRATION (HANGAR 1)
- SO - SCORING OFFICE
- CD - CONTEST DIRECTOR
- TI – TECHNICAL INSPECTION
- MG – MAIN AIRFIELD GATE
- TP - TOWPLANES PARKING - AREA STRICTLY PROHIBITED
- NP – NO PARKING ZONE (AIRSIDE)



# MAP G-23-1. GRID 23 - WEIGHT CHECK & GRID TRAFFIC

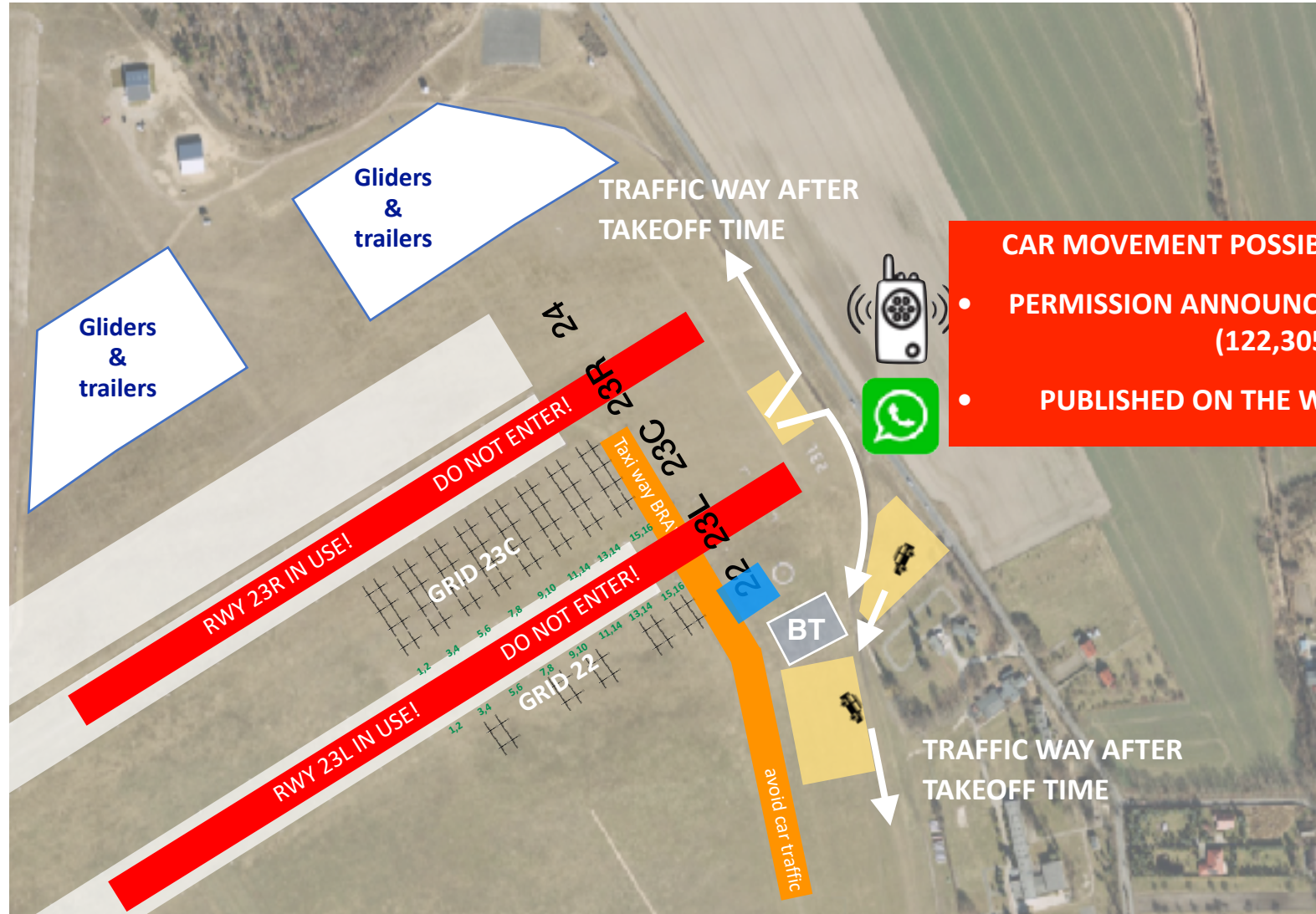


# MAP G-23-2. GRID 23 - car parking and traffic during takeoff time





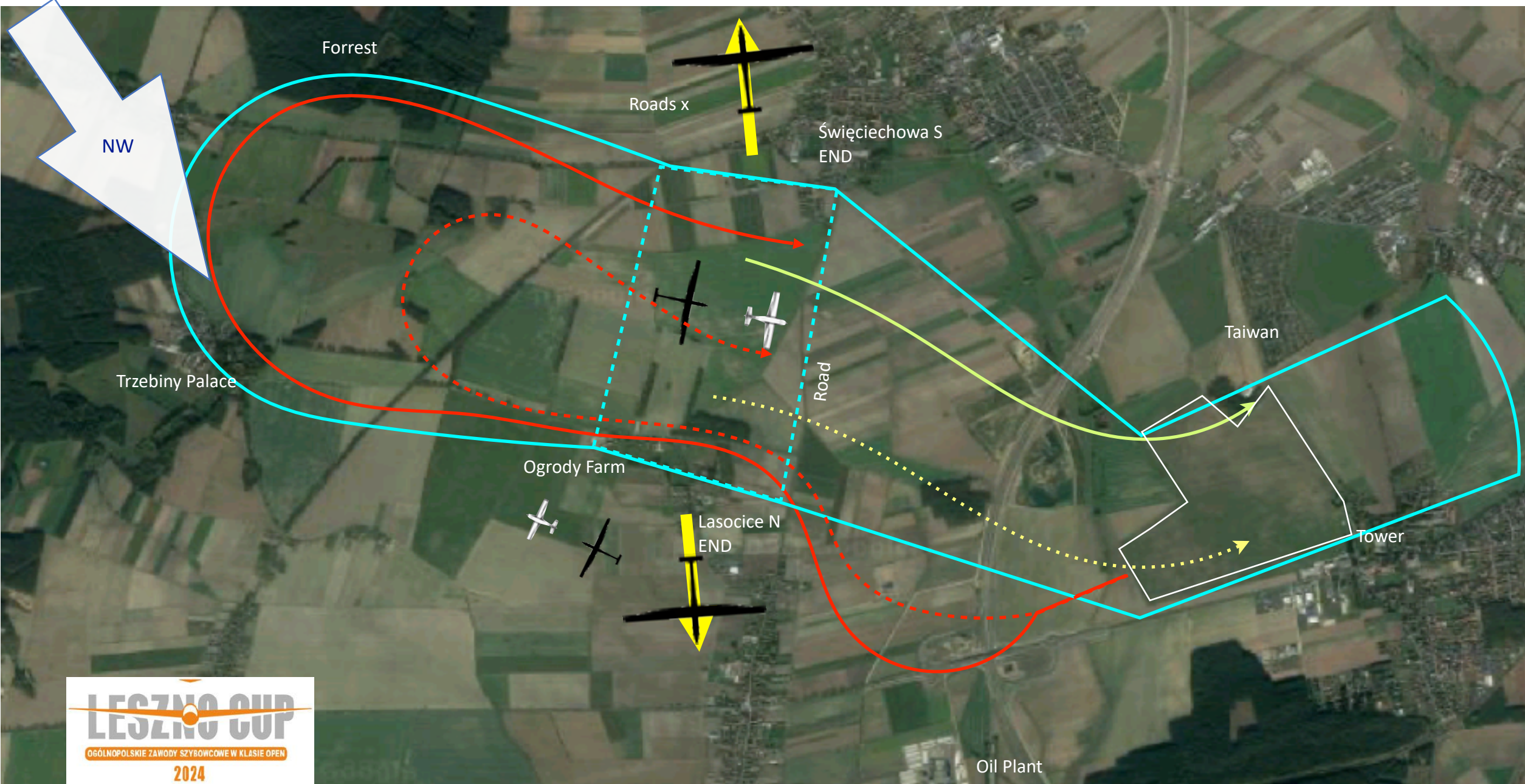
# MAP G-23-3. GRID 23, CAR TRAFFIC AFTER TAKEOFF FINISHED



**CAR MOVEMENT POSSIBLE ONLY WHEN:**

- PERMISSION ANNOUNCED BY THE RADIO (122,305)
- PUBLISHED ON THE WHATSAPP CHAT

# MAP AT-23-NW. AEROTOWING PROCEDURE 23 NW



MAP RZ-23-NW. Release Zone for AEROTOWING PROCEDURE 23 NW

Święciechowa S  
END

Lasocice - Święciechowa

Lasocice  
Roads x N END

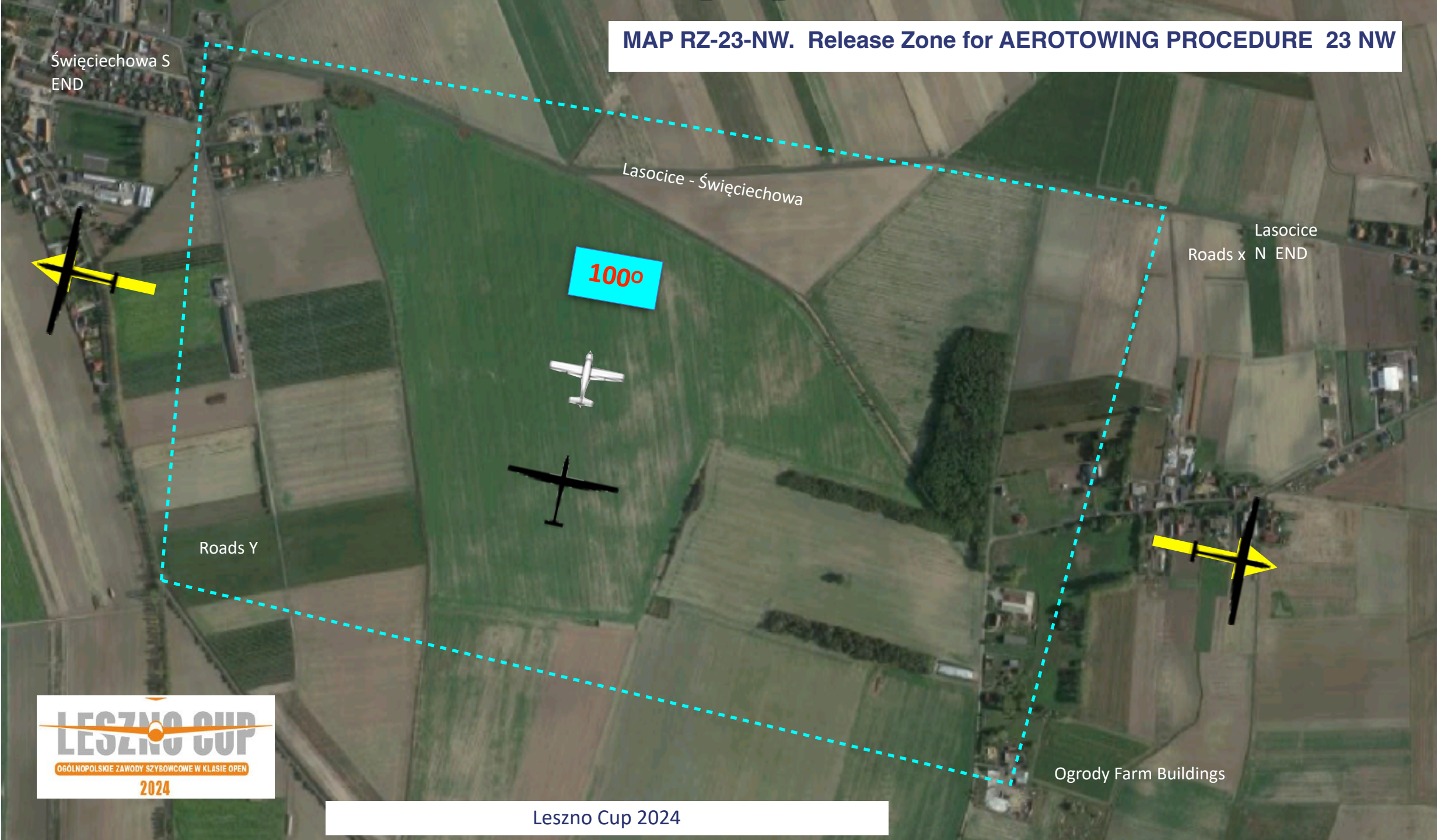
1000

Roads Y

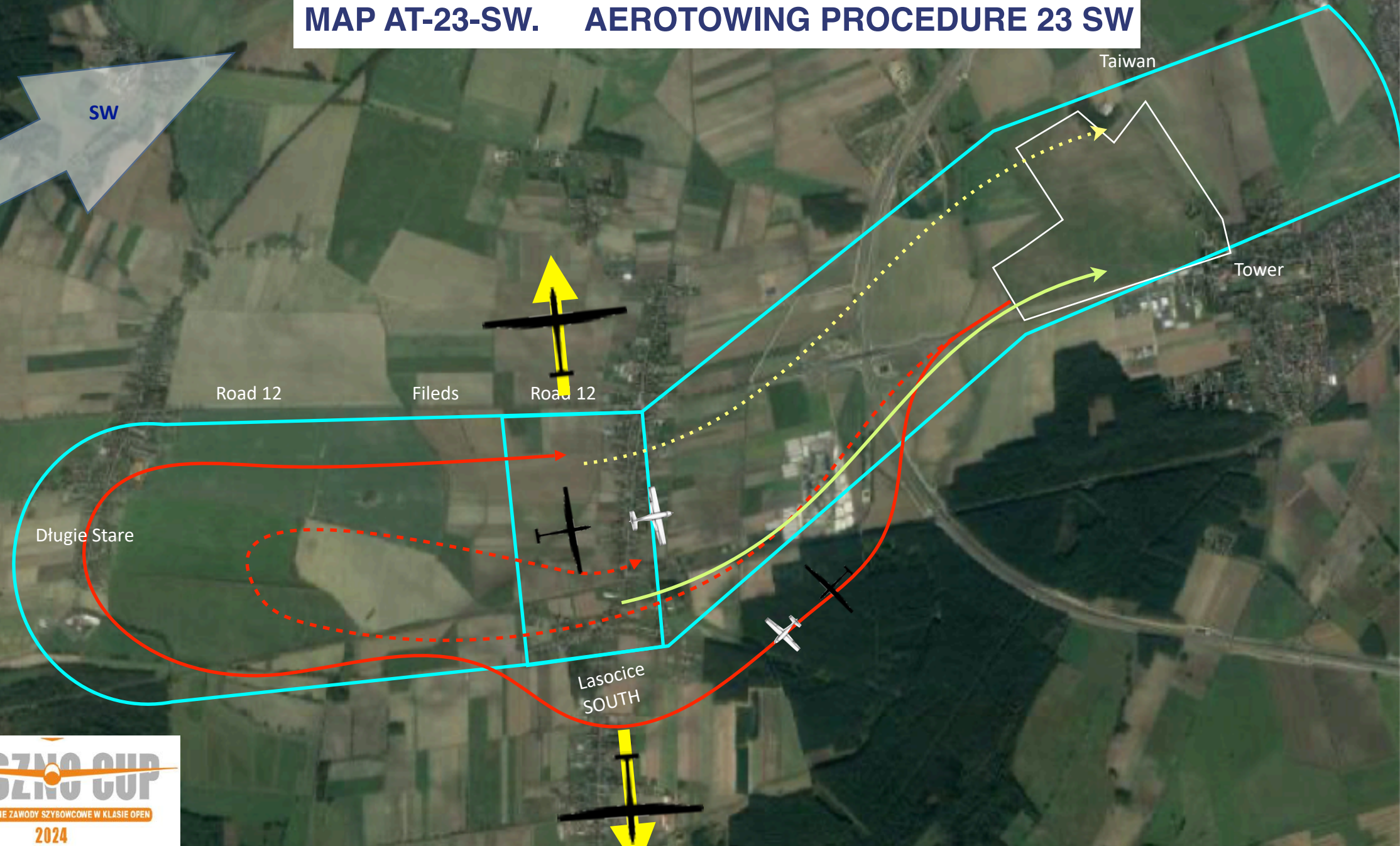
Ogrody Farm Buildings



Leszno Cup 2024



# MAP AT-23-SW. AEROTOWING PROCEDURE 23 SW



Forest

MAP RZ-23-SW. RELEASE ZONE for AEROTOWING PROCEDURE 23 SW

Przybyszewo E

Road X

Lasocice

080°

Road 14

Fields

Przybyszewo W

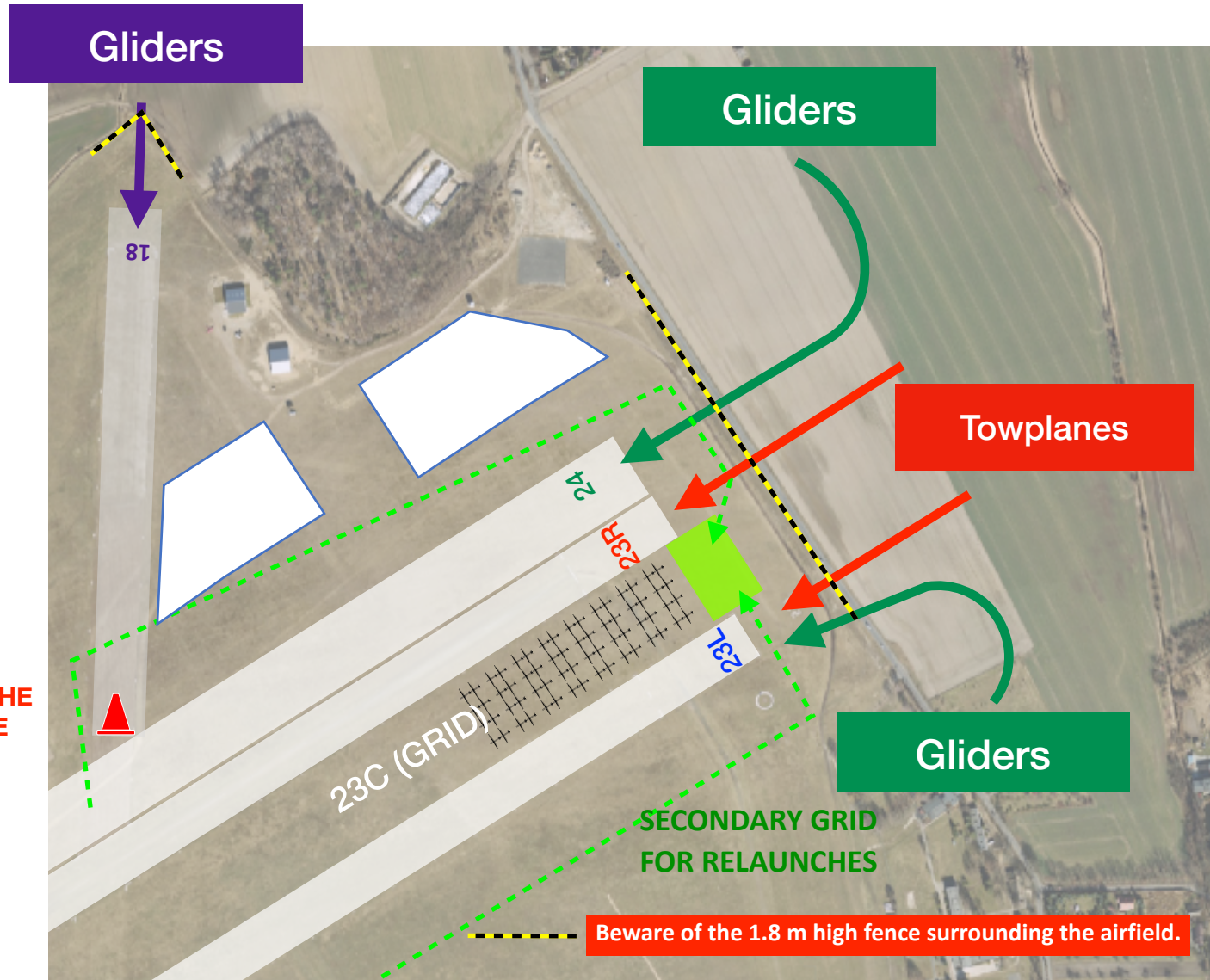


**LANDING ON RUNWAY 18 WILL ONLY BE POSSIBLE IF THE ORGANIZER GIVES THE PERMISSION.**

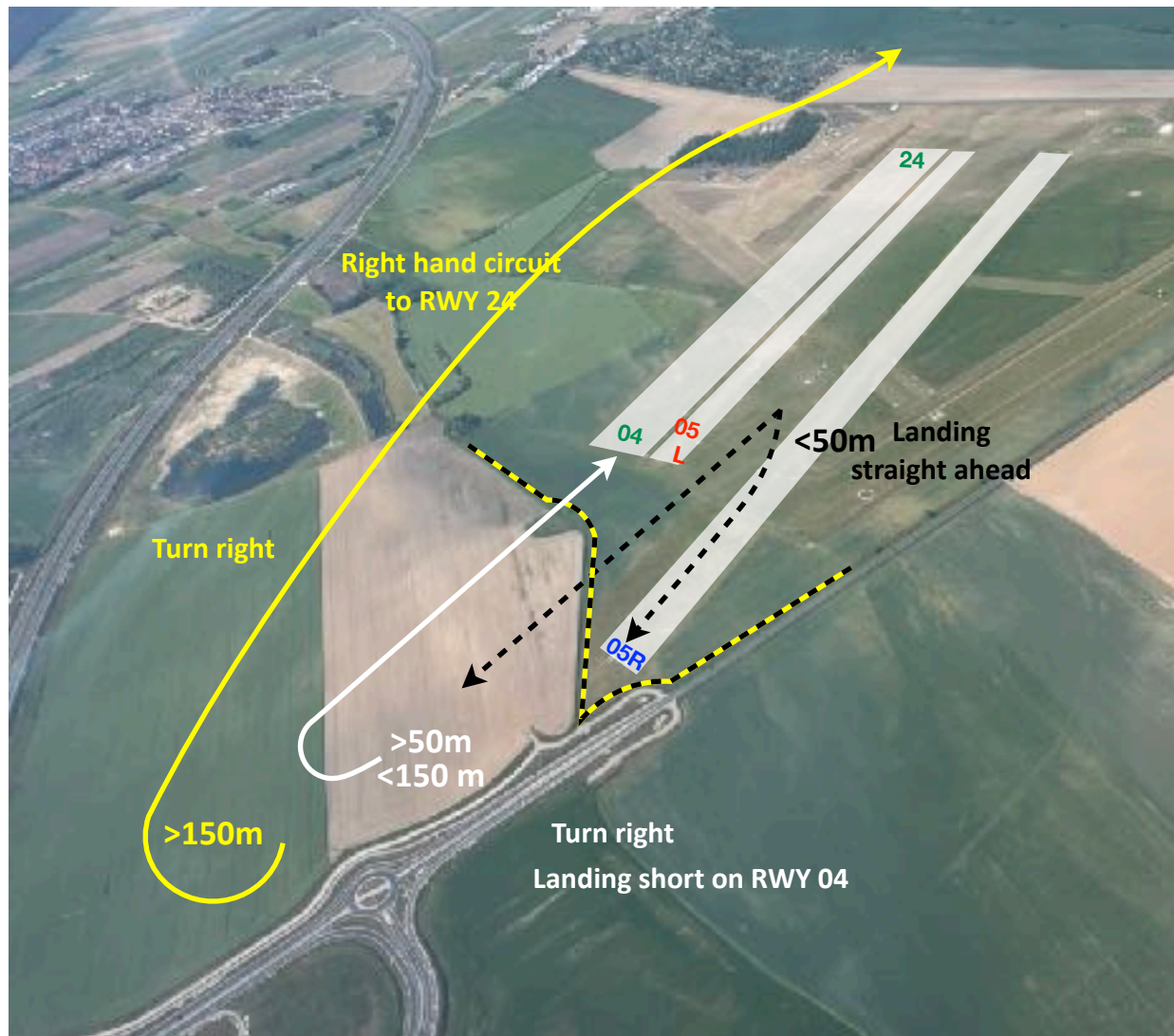
**Landing conditions:**

- tail wind component not greater than 5 m/s (10 Kt)
- cross wind component not greater than 8 m/s (15 Kt)
- the landing glider must stop before the northern edge of runway 24 at the latest!

**STOP BEFORE THE TRAFFIC CONE**



## MAP EL-23 . EMERGENCY LANDING PROCEDURE 23 in case of low release



## MAP FL-23. FINISH AND LANDING PROCEDURE 23

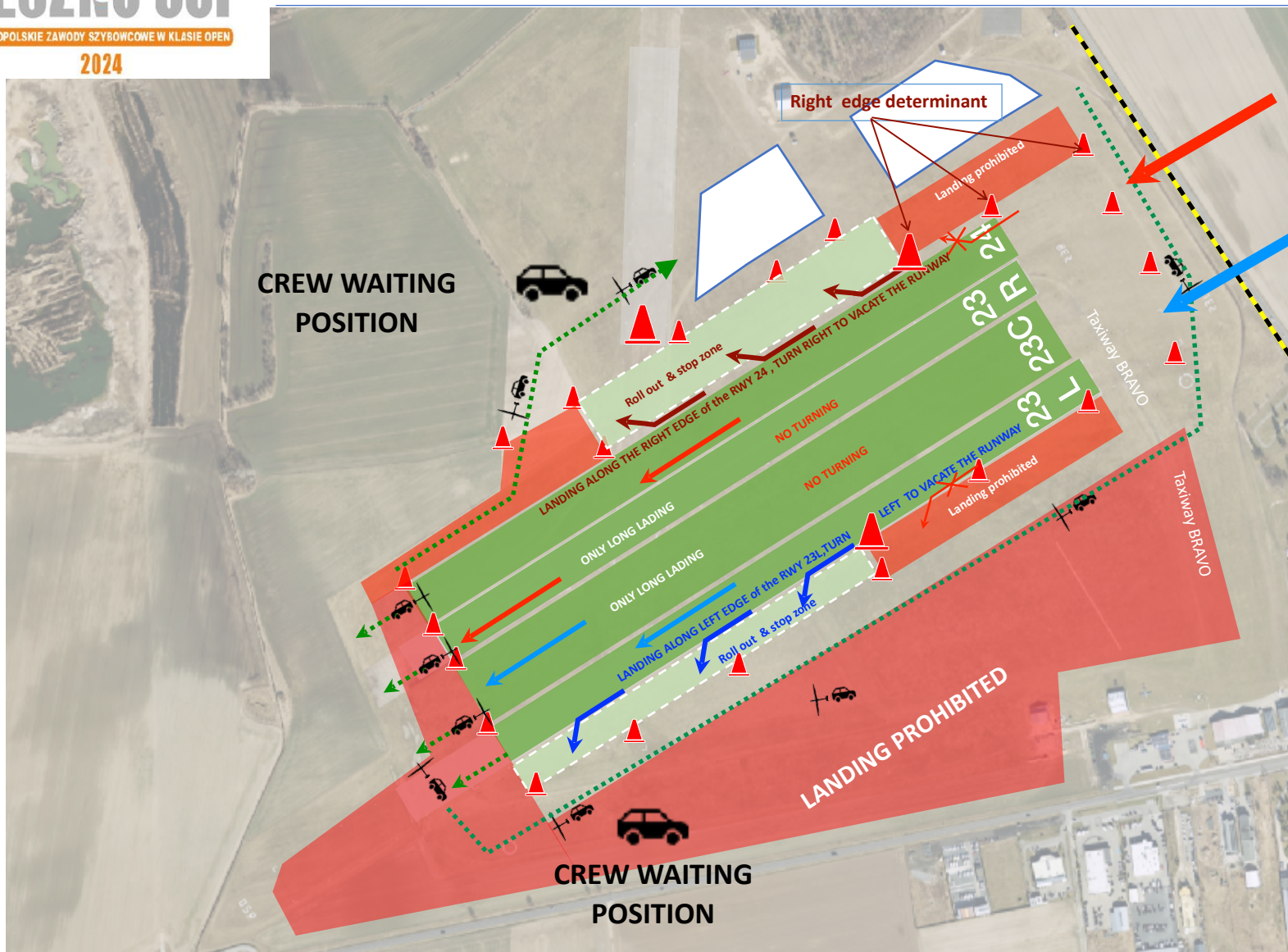


Gliders with lower energy must keep north and land on runways 24, 23R.

SPEED FINISH - avoiding sudden maneuvers - gliders lower altitude and speed following LEFT Hand Circuit and land on runway 23L



**MAP L-23. LANDING PROCEDURE 23 AND TOWING BACK TO GLIDERS PARKING**

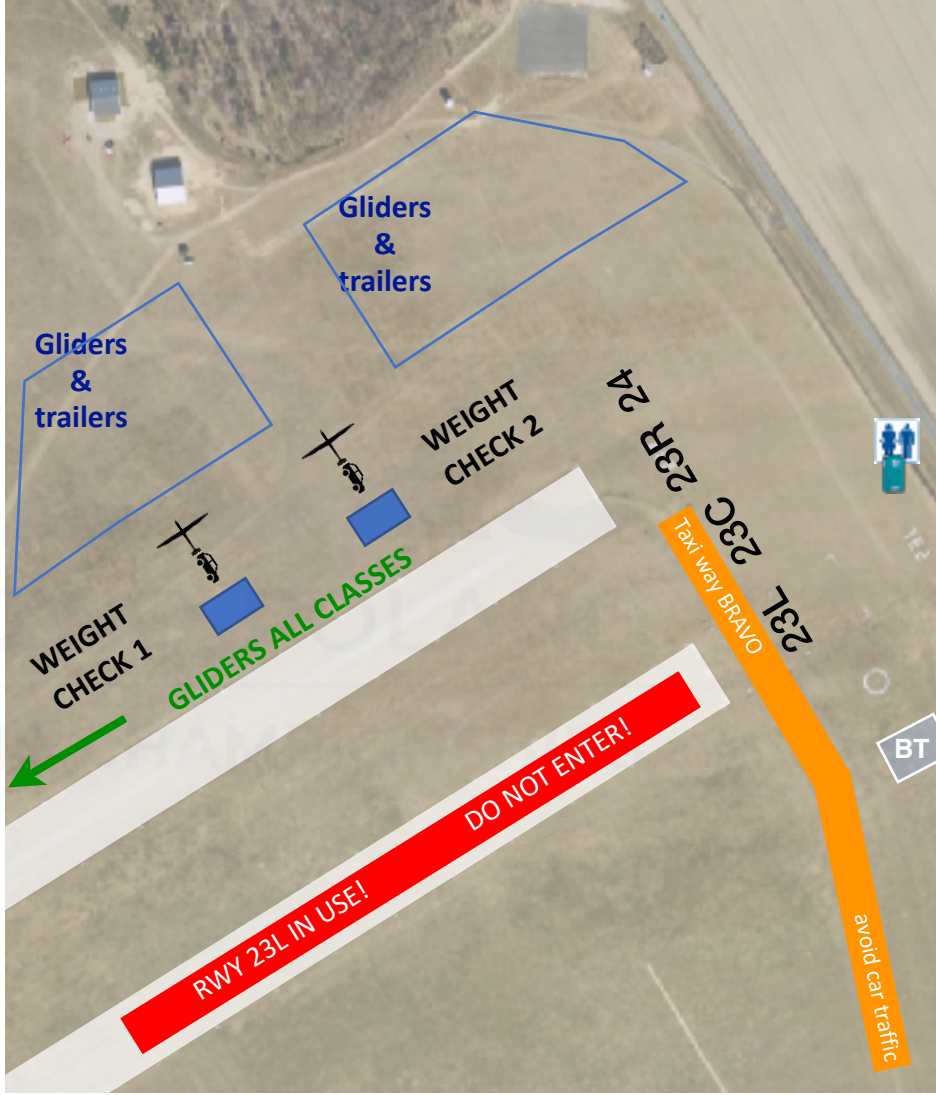
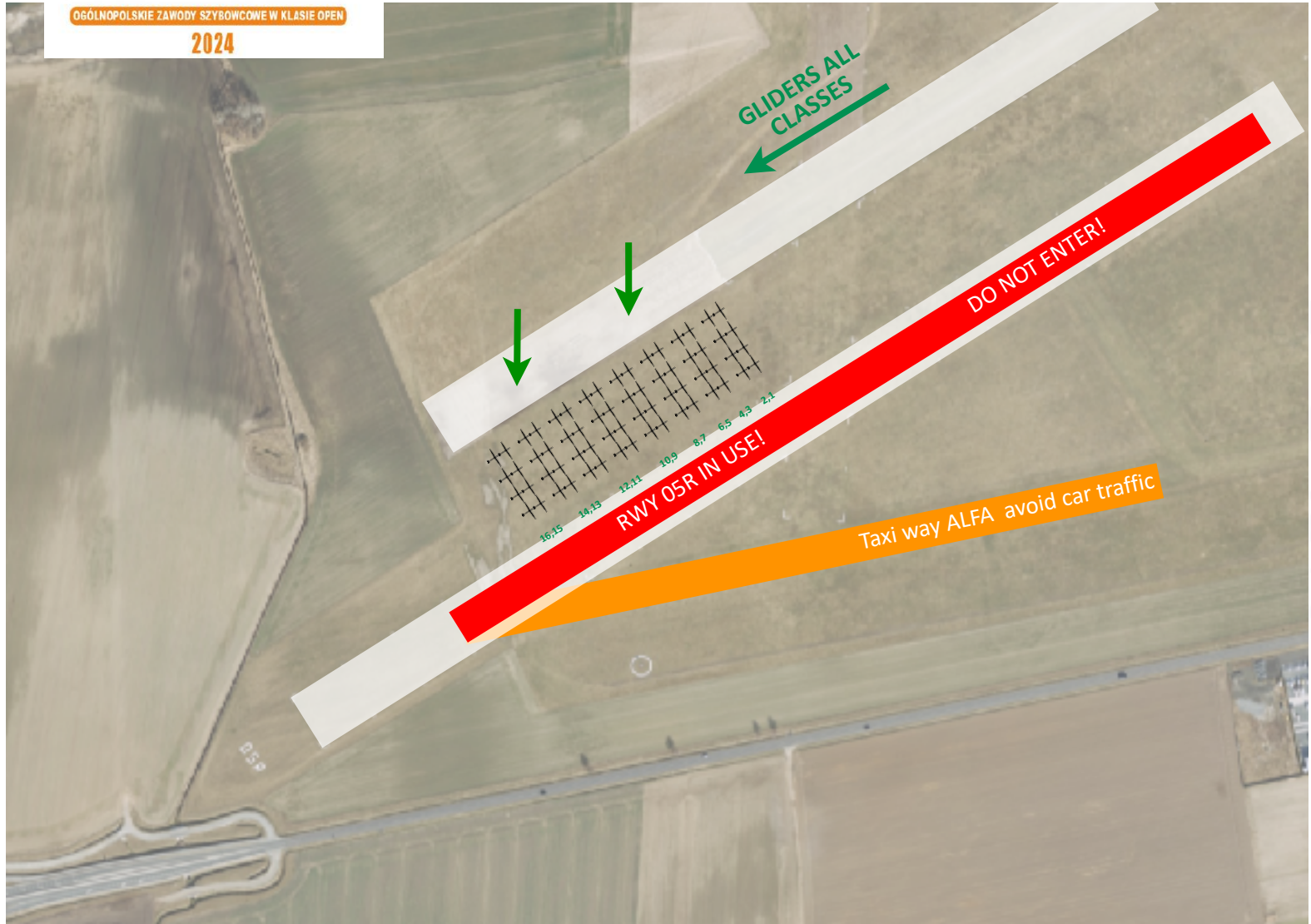


**Beware of the 1.8 m high fence surrounding the airfield. The minimum height above the asphalt public route is 5 meters.**

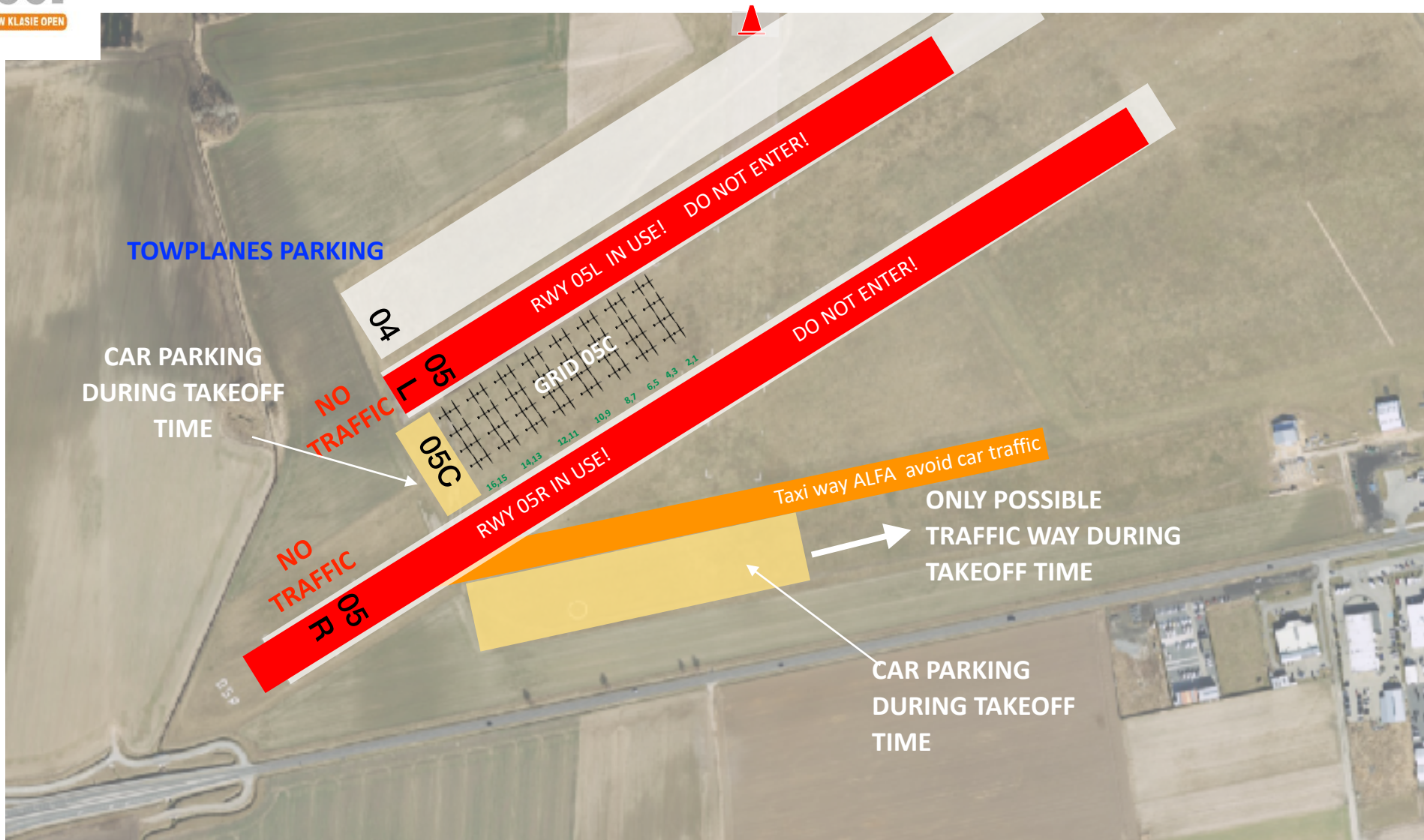
**Gliders landing along and close the northern edge of Runway 24 may leave the runway by turning right in a designated zone only.**

**Gliders landing along and close the southern edge of Runway 23L may leave the runway by turning left in a designated zone only.**

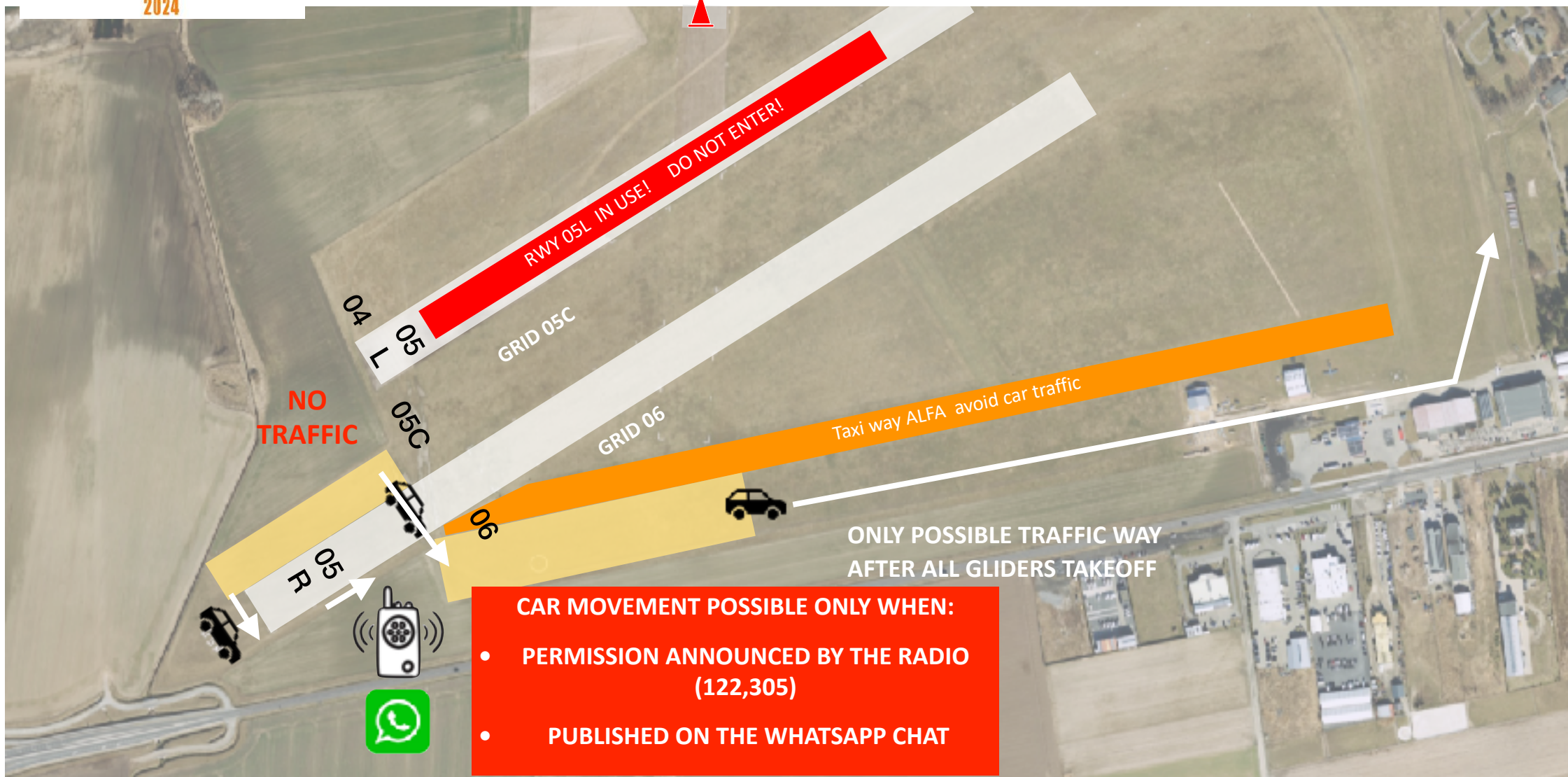
# MAP 05-1. GRID 05, WEIGHT CHECK & GRID TRAFFIC



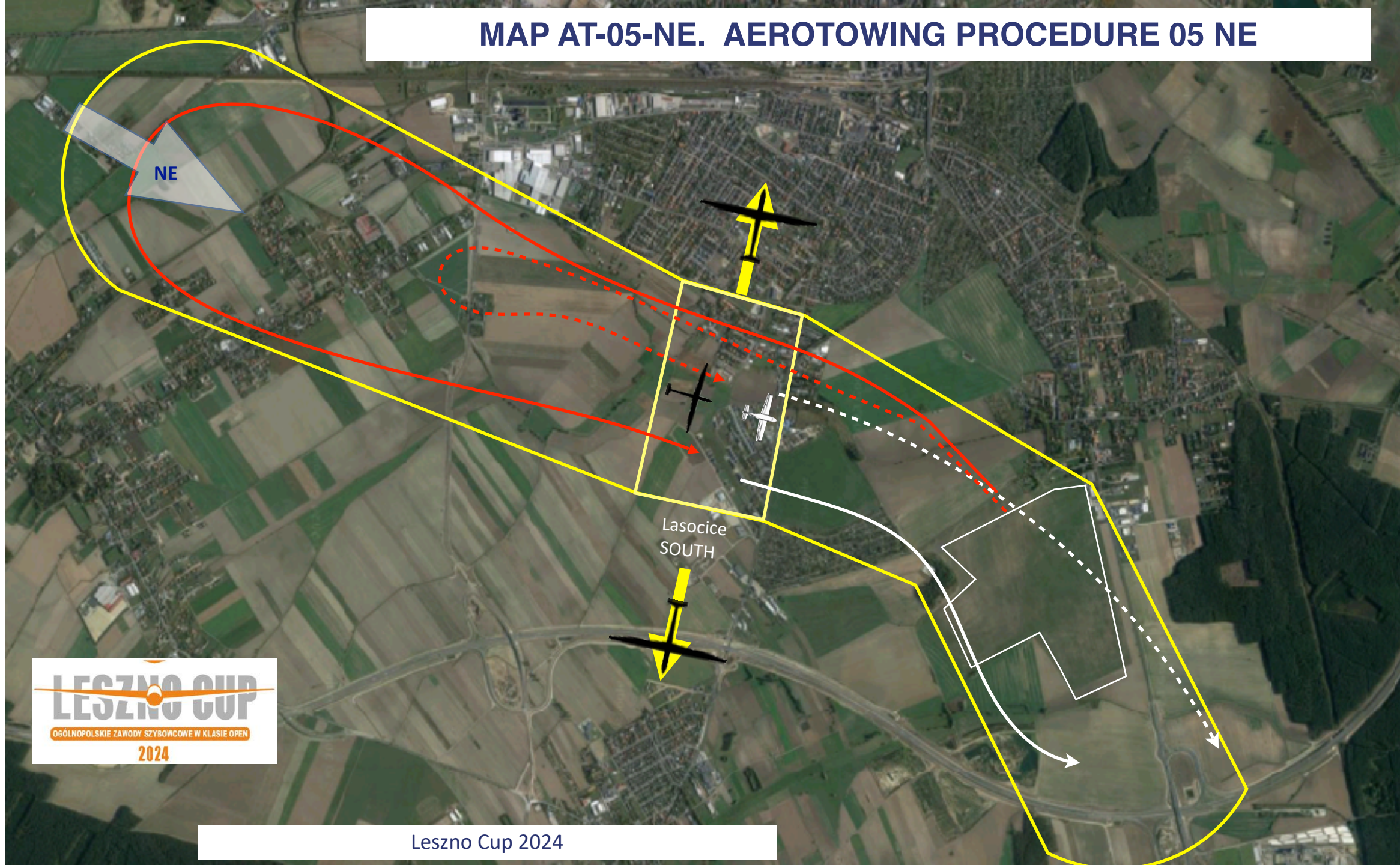
## MAP G-05-2. GRID 05, car parking and traffic during takeoff time



## MAP G-05-3. GRID 05, CAR TRAFFIC AFTER TAKEOFF FINISHED



# MAP AT-05-NE. AEROTOWING PROCEDURE 05 NE



NE

Lasocice  
SOUTH



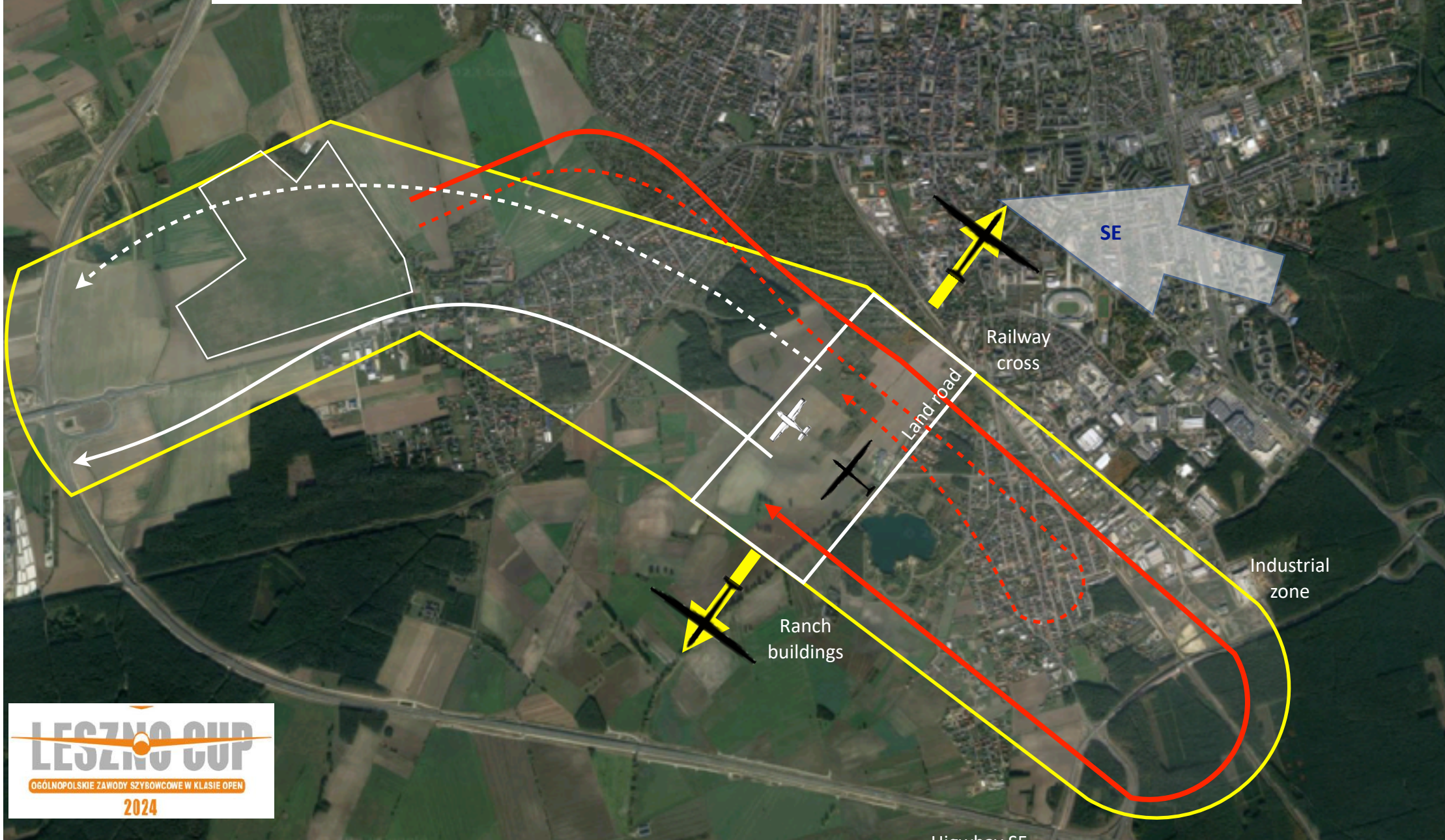
# MAP RZ-05-NE. RELESE ZONE for AEROTOWING PROCEDURE 05 NE



Leszno Cup 2024



# MAP AT-05-SE. AEROTOWING PROCEDURE 05 SE

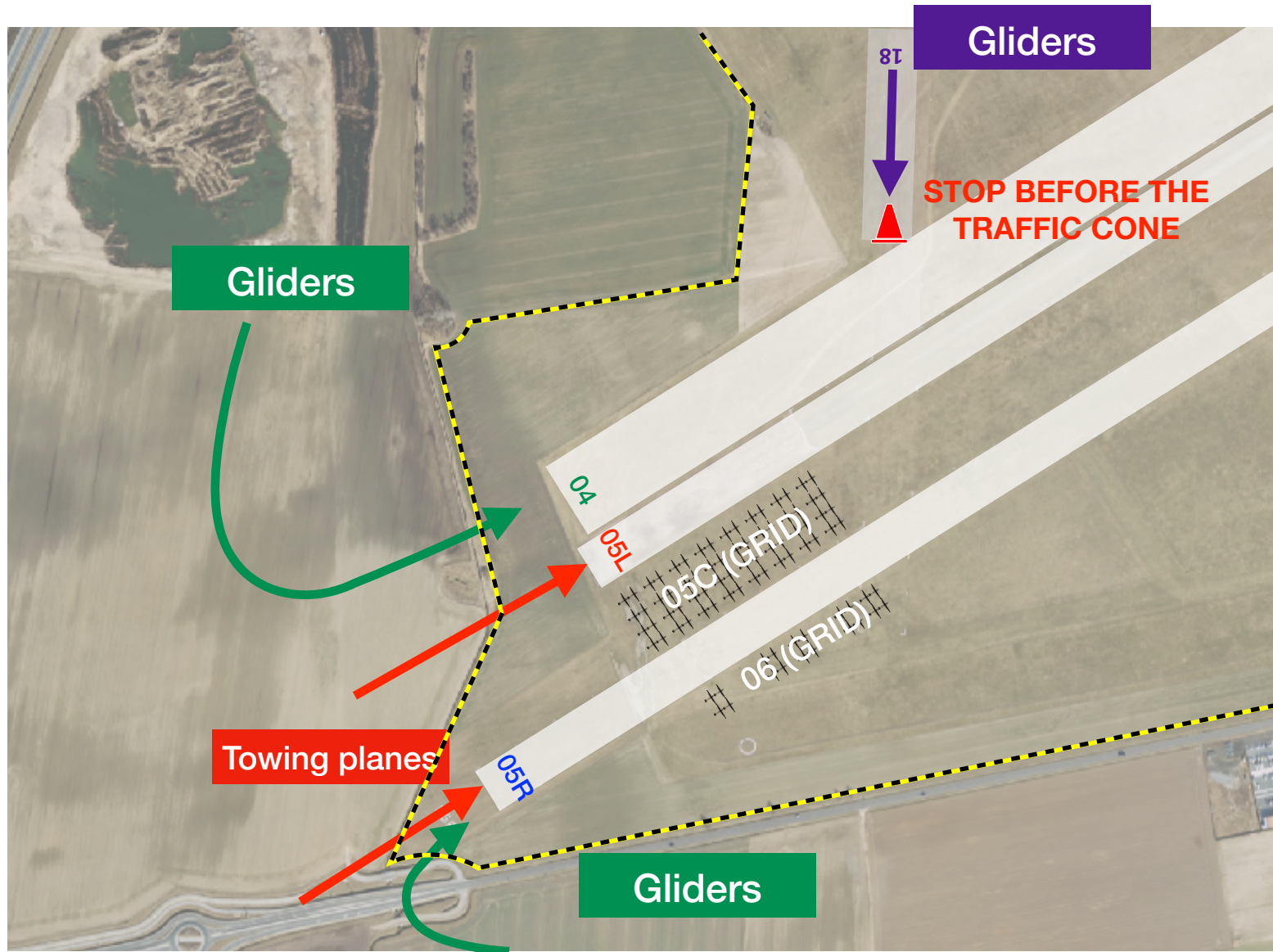


MAP RZ-05-SE. RELEASE ZONE for AEROTOWING PROCEDURE 05 SE





# MAP RL-05. LANDING PROCEDURE 05 FOR RELAUNCH



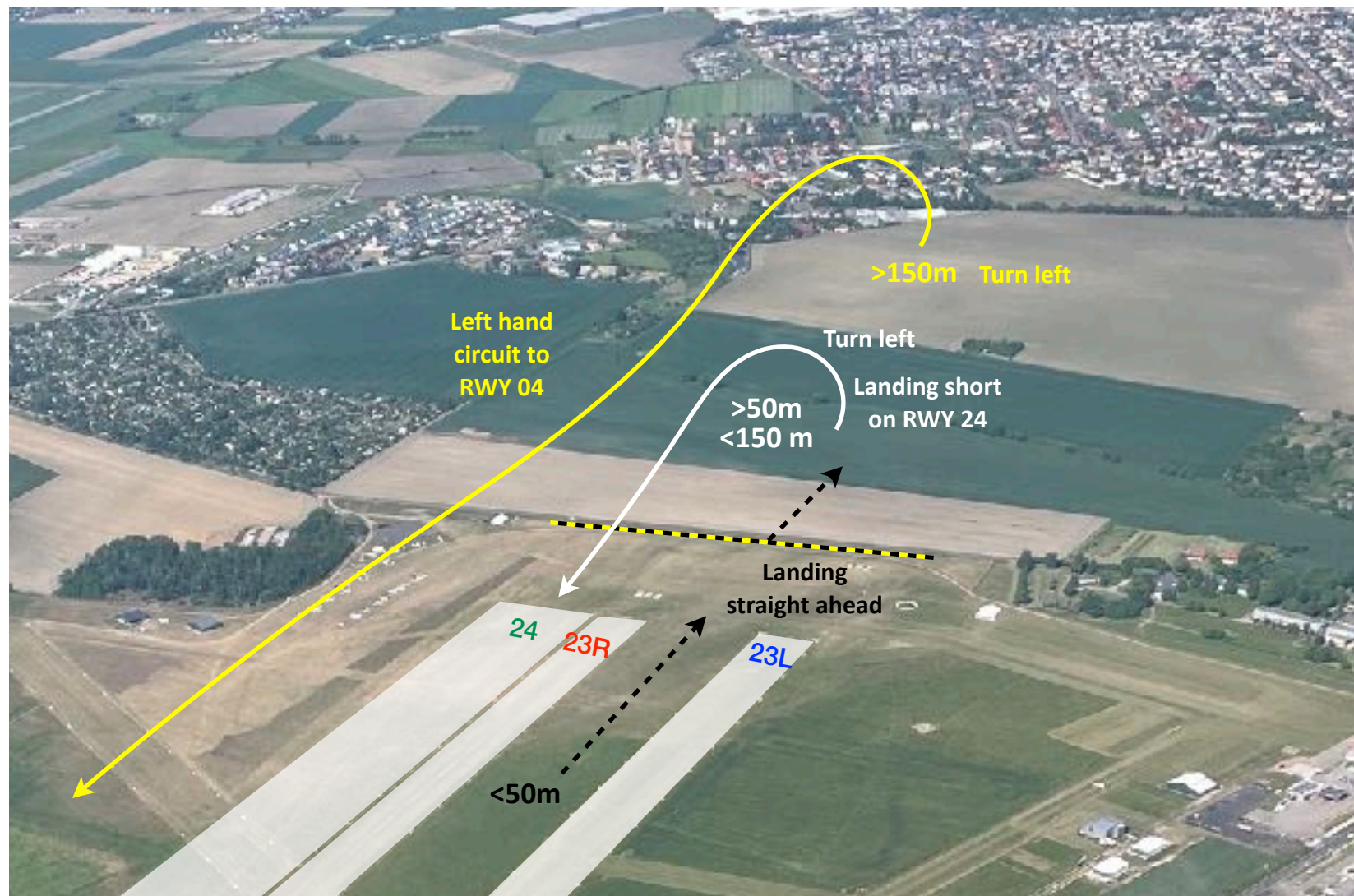
**LANDING ON RUNWAY 18 WILL ONLY BE POSSIBLE IF THE ORGANIZER GIVES PERMISSION.**

**Landing conditions:**

- tail wind component not greater than 5 m/s (10 Kt)
- cross wind component not greater than 8 m/s (15 Kt)
- the landing glider must stop before the northern edge of runway 04 at the latest!

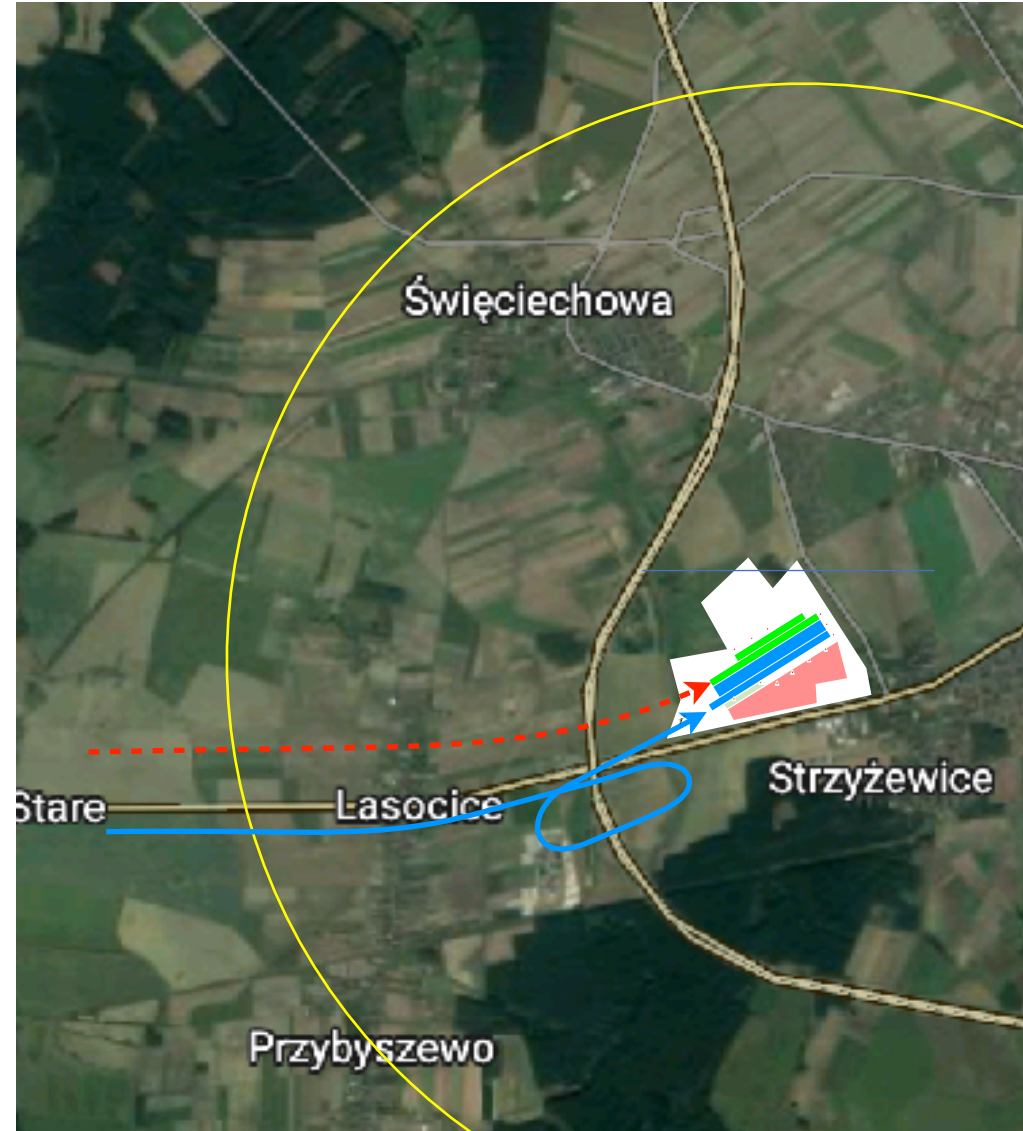


## MAP EL-05. EMERGENCY LANDING PROCEDURE 05 in case of low release



Gliders with lower energy must keep north and land on runways 04, 05L.

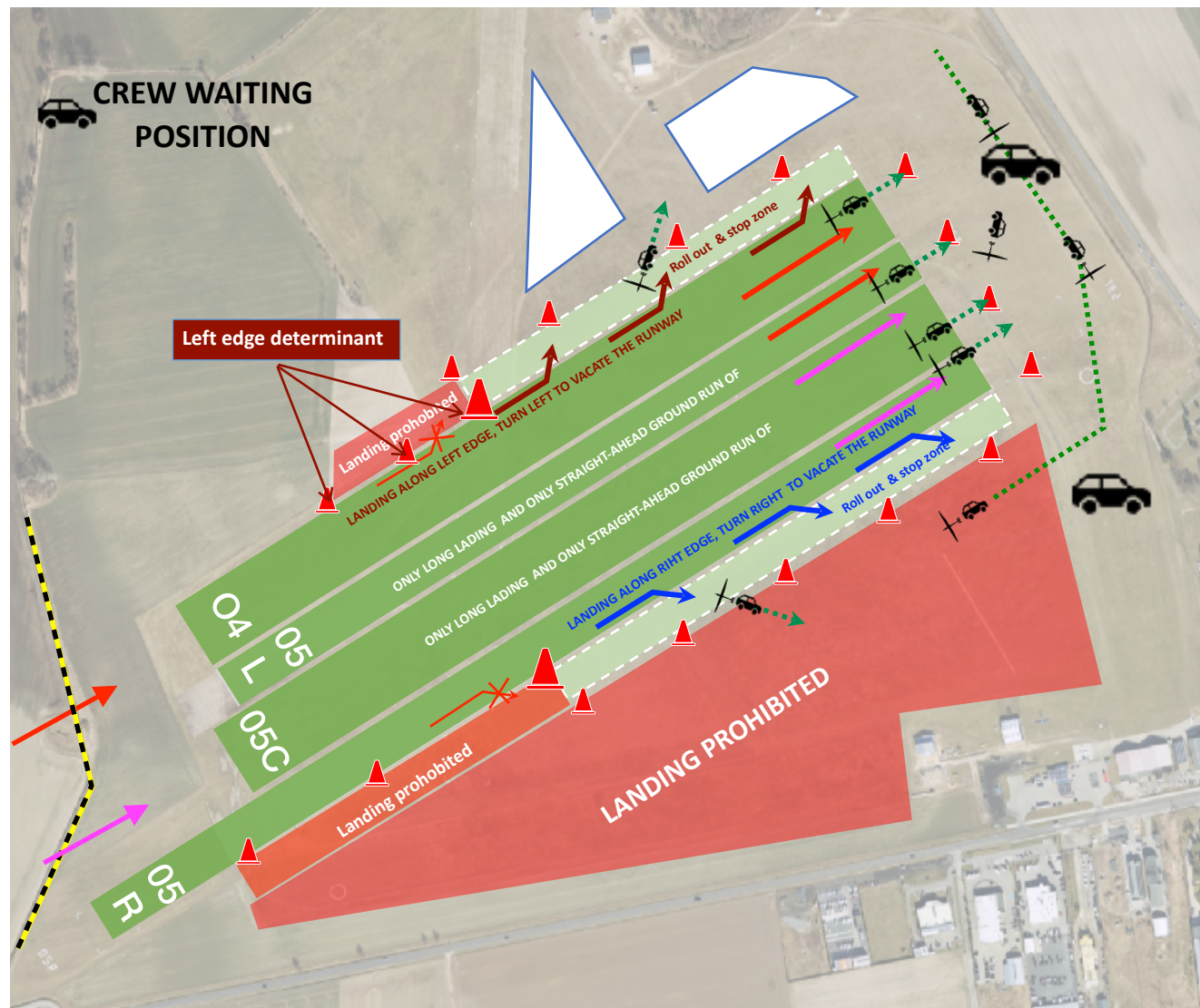
**SPEED FINISH** - avoiding sudden maneuvers - gliders must follow the south right hand circuit and land on runway 05R or 05C



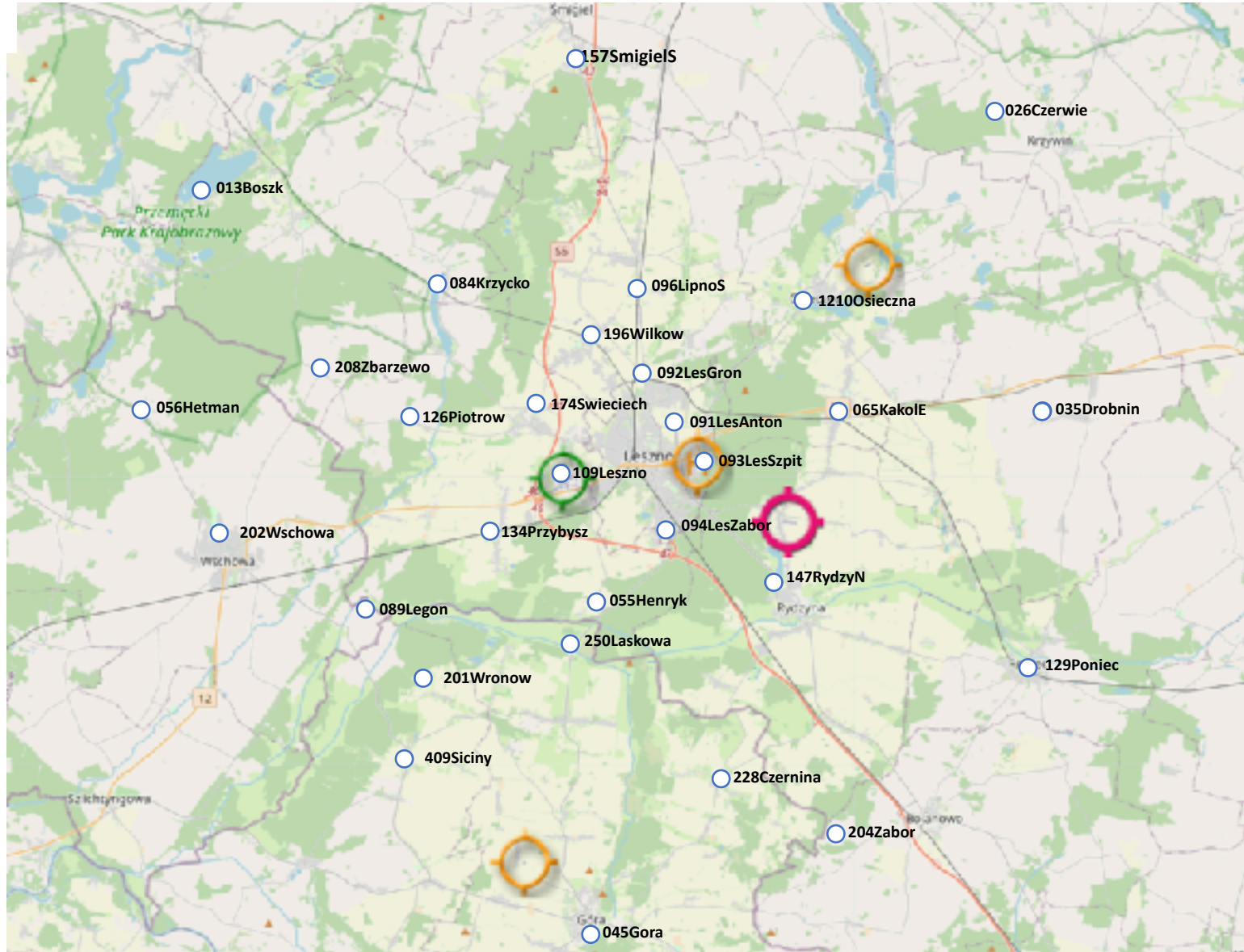
Gliders landing along and close to the northern edge of Runway 04 may leave the runway by turning left in a designated zone only

Gliders landing along and close to the southern edge of Runway 05R may leave the runway by turning right in a designated zone only

Beware of the 1.8 m high fence surrounding the airfield



## MAP DP. DEPARTURE POINTS



**Launch - 122,305 MHz**

**Finish - 122,305 MHz**

**Landing -122,305 MHz**

**Start gate frequency - 120,705 MHz**

**Common Safety frequency - 120,705 MHz**